

WALL ELEMENTS PIXEL WALL

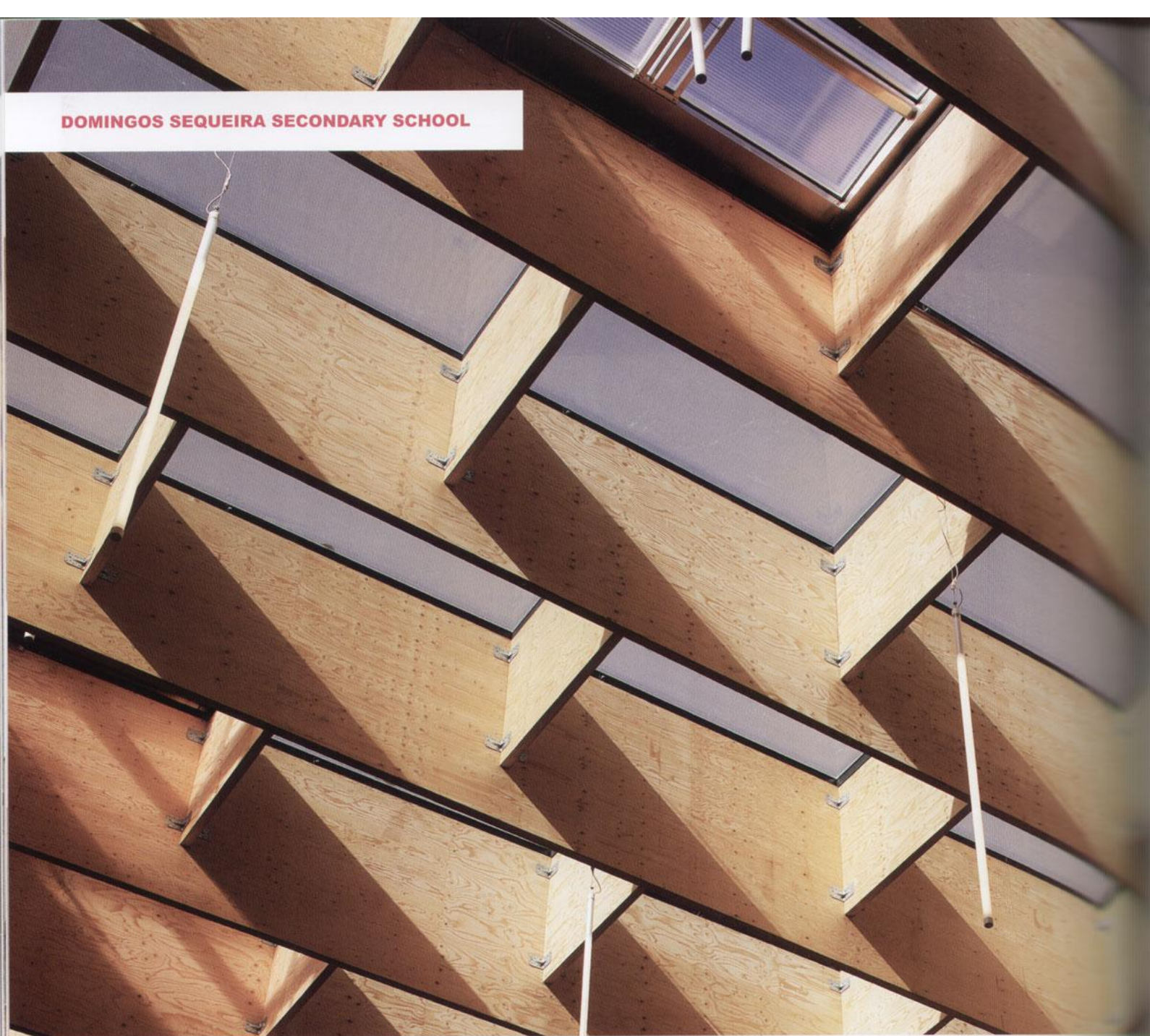
建筑立面材料语言

像素墙

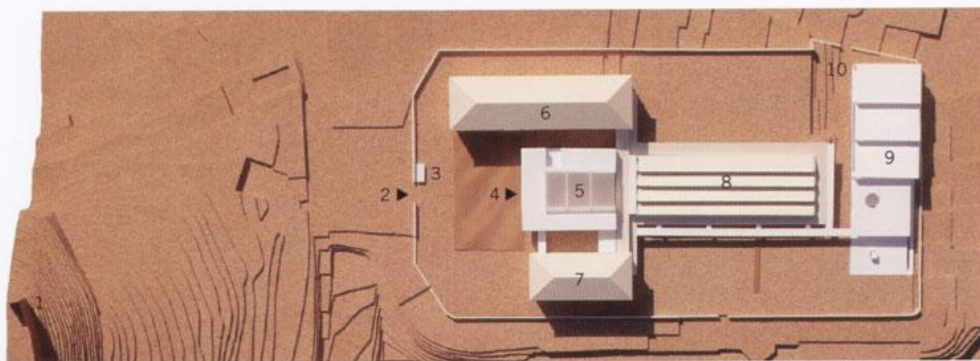
凤凰空间·北京 编

江苏人民出版社

DOMINGOS SEQUEIRA SECONDARY SCHOOL



© FG+SG – Fernando Guerra



总体规划图 GENERAL PLAN

- | | |
|-----------------------|---|
| 1. 莱里亚城堡 | 1. Leiria Castle |
| 2. 学校入口 | 2. Entrance to The School Grounds |
| 3. 接待处 | 3. Reception |
| 4. 中心建筑入口 | 4. New Central Building Entrance |
| 5. 新建筑 (入口、行政区域和公共空间) | 5. New Building (Entry, Administrative and Common Spaces) |
| 6. 主教室楼 | 6. Main Classroom Block |
| 7. 多功能室/自助餐厅 | 7. Multipurpose Room/Cafeteria |
| 8. 实验室及车间大楼 | 8. Laboratory and Workshop Building |
| 9. 室内体育馆 (内设浴室、更衣室) | 9. Covered Sports Field (+Shower and Change rooms) |
| 10. 科技楼 | 10. Technical Block |

多明戈斯塞凯拉中学, BFJ Arquitectos - Francisco Amaral Pólvora, 葡萄牙, 莱里

多明戈斯塞凯拉中学的现代化升级项目, 是Parque Escolar公司主导的中学现代化升级规划的一部分。木格栅的顶棚为学校带来一个精彩的空间。塔是一个光线充沛的大型空间, 为整个学校的集会点, 也是建筑最吸引人的地方, 悬挂在墙壁上的学生们的绘画作品也为整个空间增色不少。

Domingos Sequeira Secondary School, BFJ Arquitectos - Francisco Amaral Pólvora, Leiria, Portugal, 2010

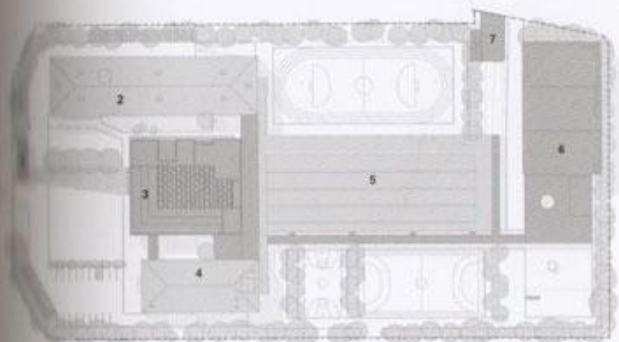
The modernization of Domingos Sequeira Secondary School in Leiria is part of a secondary school modernization program promoted by Parque Escolar - EPE. The school's central atrium is a large space with natural light, which is a meeting point for the entire school community. Spatial features are enhanced by the paintings produced by the school students.



© FG+SG - Fernando Guerra, Sergio Guerra



© FG+SG - Fernando Guerra, Sergio Guerra



总体规划图 GENERAL PLAN

1. Reception
2. Main Classroom Block
3. New Building (Entry, Administration And Common Spaces)
4. Multipurpose Room / Cafeteria
5. Laboratory And Workshop Building
6. Covered Sports Field (+Shower And Change Rooms)
7. Technical Block

入口、行政区域和公共空间
自助餐厅
木工工作间
体育馆 (内设浴室、更衣室)



东立面图 EAST FAÇADE



北立面图 NORTH FAÇADE



西立面图 WEST FAÇADE



© FG+SG - Fernando Guerra, Sergio Guerra

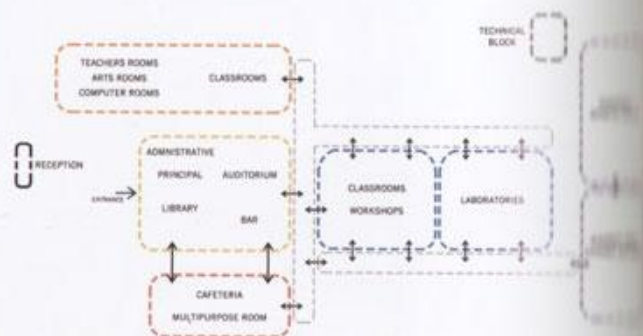
多明戈斯塞凯拉中学, BFJ Arquitectos - Francisco Amaral Pólvora, 葡萄牙, 莱里亚, 2010

对原建筑的改造提升了空间和结构品质, 并满足了目前舒适性、安全性和通畅性等方面的需要。

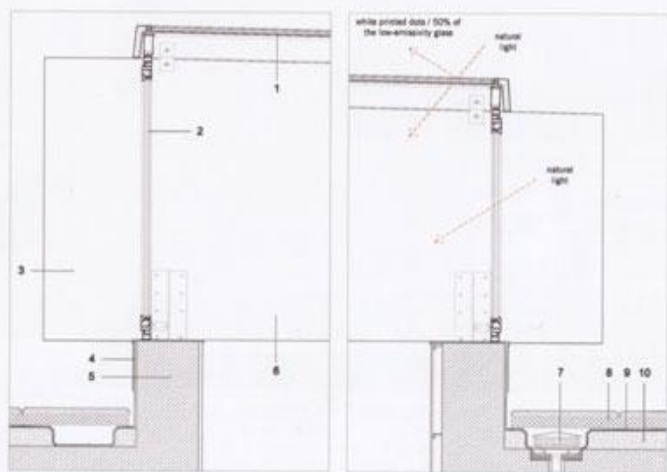
Domingos Sequeira Secondary School, BFJ Arquitectos - Francisco Amaral Pólvora, Leiria, Portugal, 2010

This project also includes work as follows: remodeling the existing buildings in order to enhance their spatial and construction qualities, ensuring the fulfillment of the current demands in terms of comfort, security and accessibility.

- | | |
|------------|-----------------------------|
| 1. 接待处 | 1. Reception |
| 2. 教师休息室 | 2. Teachers' rooms |
| 3. 美术室 | 3. Arts rooms |
| 4. 计算机室 | 4. Computer rooms |
| 5. 教室 | 5. Classrooms |
| 6. 入口 | 6. Entrance |
| 7. 行政办公室 | 7. Administrative |
| 8. 校长室 | 8. Principal |
| 9. 图书馆 | 9. Library |
| 10. 礼堂 | 10. Auditorium |
| 11. 酒吧 | 11. Bar |
| 12. 餐厅 | 12. Cafeteria |
| 13. 多功能室 | 13. Multipurpose room |
| 14. 工作间 | 14. Workshops |
| 15. 实验室 | 15. Laboratories |
| 16. 技术区 | 16. Technical block |
| 17. 室内体育馆 | 17. Covered sports field |
| 18. 浴室及更衣室 | 18. Shower and change rooms |



平面布置图



结构详图 STRUCTURE DETAIL

1. Technal系列 MX-MECANO 双层玻璃铝制通风口
2. Technal系列FBI 双层玻璃铝制窗架
3. 屋顶覆有VM Zinc钛锌NO12
4. 外部Dryvit隔热包层
5. 钢筋混凝土结构
6. 屋顶结构 Kerto-S单板层积材
7. Geberit Pluvia 排水系统
8. 绝热板及 Filtron R10排水装置 (3.5 cm多孔混凝土, 6 cm挤压聚苯乙烯)
9. 防水系统: a)保护—Feltempo 300 土工织物层, b)防水—Rhenofol CG PVC膜, c)隔离—Feltempo 300 土工织物层
10. 轻质混凝土斜板, $i=0.5\%$

1. Fixed "Technal series MX-MECANO" vent in aluminum with double glazing
2. Projecting "Technal series FBI" window frame in aluminum with double glazing
3. Roof cladding in "VM Zinc" titanium zinc NO12
4. Exterior "Dryvit" thermal cladding type
5. Reinforced concrete structure
6. Roof structure in "Kerto-S" laminated veneer lumber
7. "Geberit Pluvia" drainage system
8. Thermal slab with integrated "Filtron R10" drainage (3.5 cm layer of gray porous concrete, 6 cm extruded polystyrene)
9. Waterproofing system: a) Protection - "Feltempo 300" geotextile layer, b) Waterproofing - "Rhenofol CG" PVC membrane, and c) Separation - "Feltempo 300" geotextile layer
10. Lightweight concrete sloped screed, $i=0.5\%$

