

HIGH-
ARCHITECTURE
LIGHTS

Shanglin Edition

6



D. Manuel I Secondary School

Rua São João De Deus, Beja, Portugal

BFJ Arquitectos

The modernization of the D. Manuel I Secondary School in Beja is part of the first phase of the secondary school modernisation programme promoted by Parque Escolar - EPE, and can be summarised in the following measures:

Renovation of the existing buildings in order to improve and enhance their spatial and constructive features in accordance with the most recent comfort, safety and accessibility requirements.

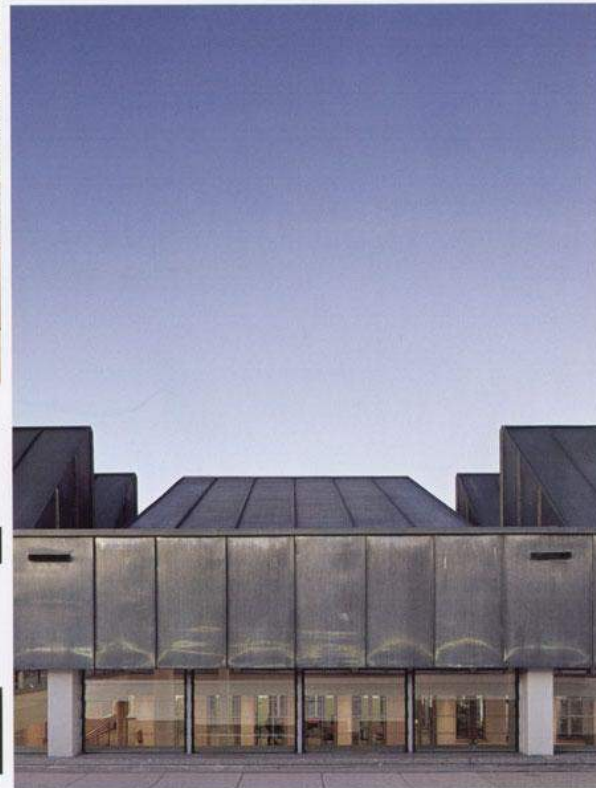
Construction of a new laboratory building, inserted in the terrain to connect the main existing building with the old workshops;

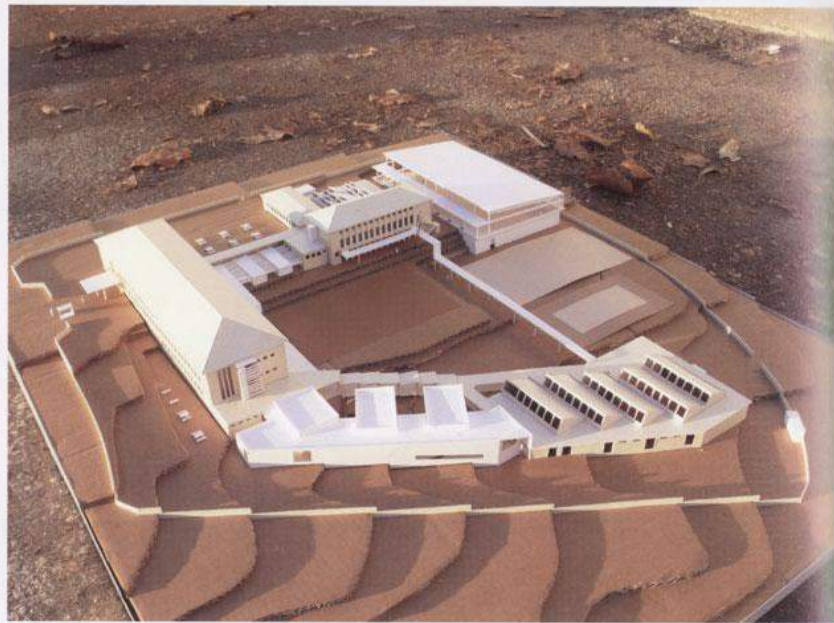
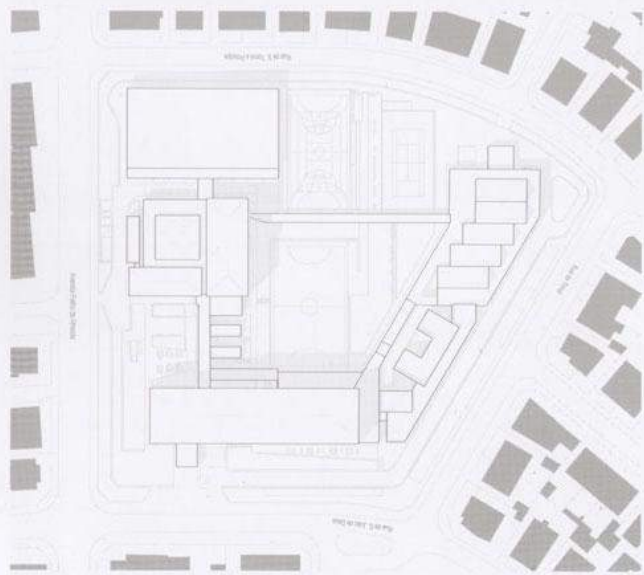
Renovation of the former covered student's recess area. Due to its location, it is conceived as a junction between the various existing buildings, creating a multifunctional covered area, encouraging social interaction amongst the entire school community. The project incorporates a North-facing irregular saw-tooth roof, providing this space with diffuse and variable natural light originating from the modules' different slopes, and simultaneously protecting the space from the excessive Southern solar radiation;

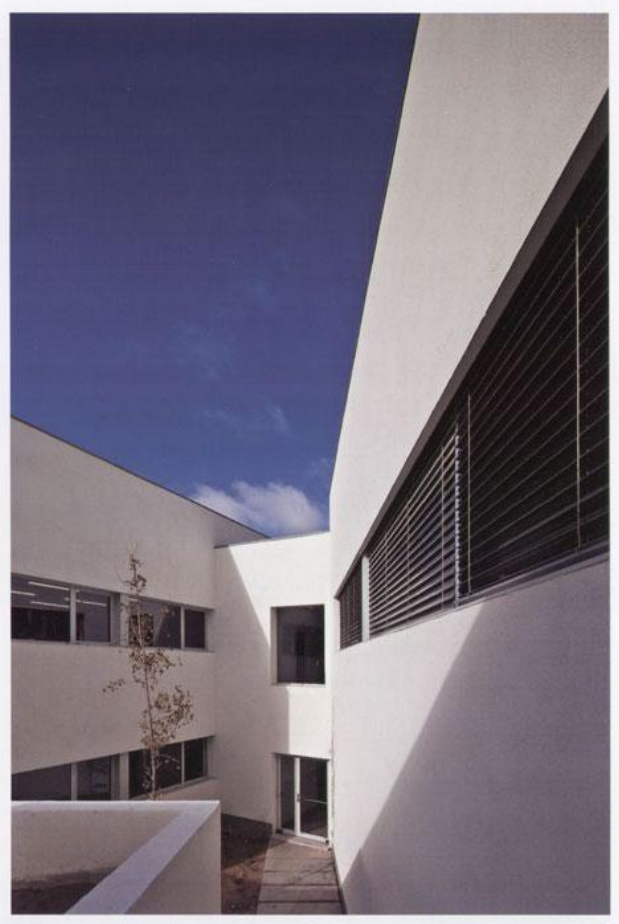
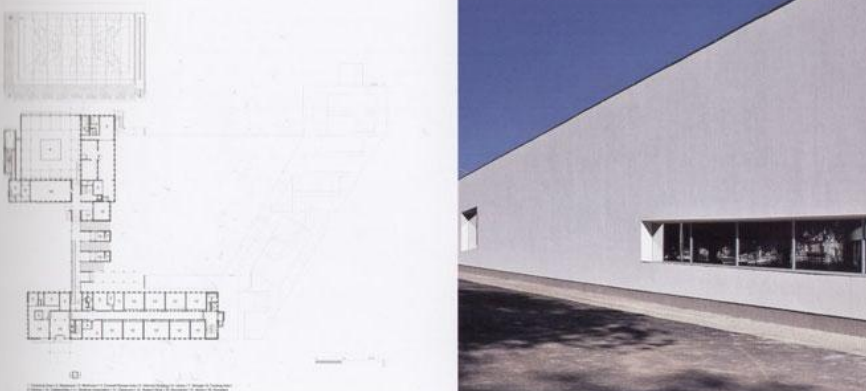
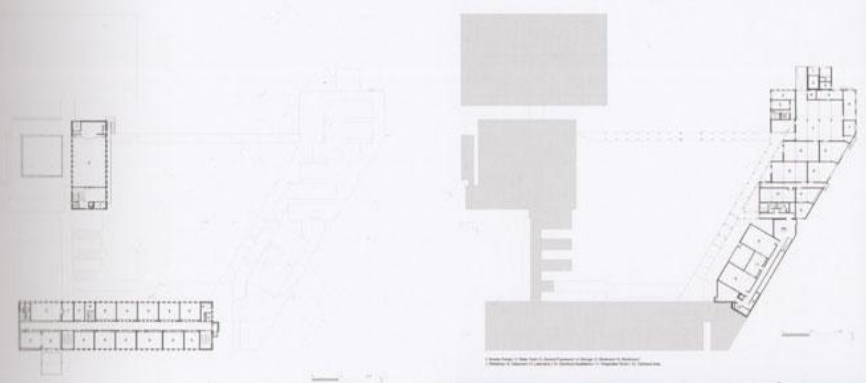
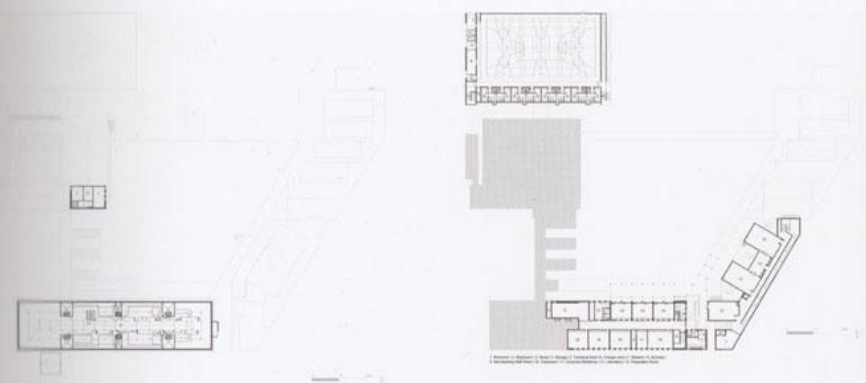
Integration of a new Library / Resource Centre: situated next to the covered recess area, this zone is conceived as the dynamic element in the school thanks to the high traffic it generates and its connection to the central space. Through its highly visible location the library becomes the interactive element of the school. The layout reveals the intent of emphasizing the importance of its entrance from the covered recess area, giving immediate access to the informal reading area and the multimedia room. The documentation reference area is situated on the opposite side, where a more protected and quiet space is ensured.

Construction of a new covered sports field, including athletic and ancillary facilities. It is positioned and designed to offer protection from crosswinds and direct sunlight. The shower and change rooms take advantage of the terrain's natural slope, easing their integration and thermal comfort.

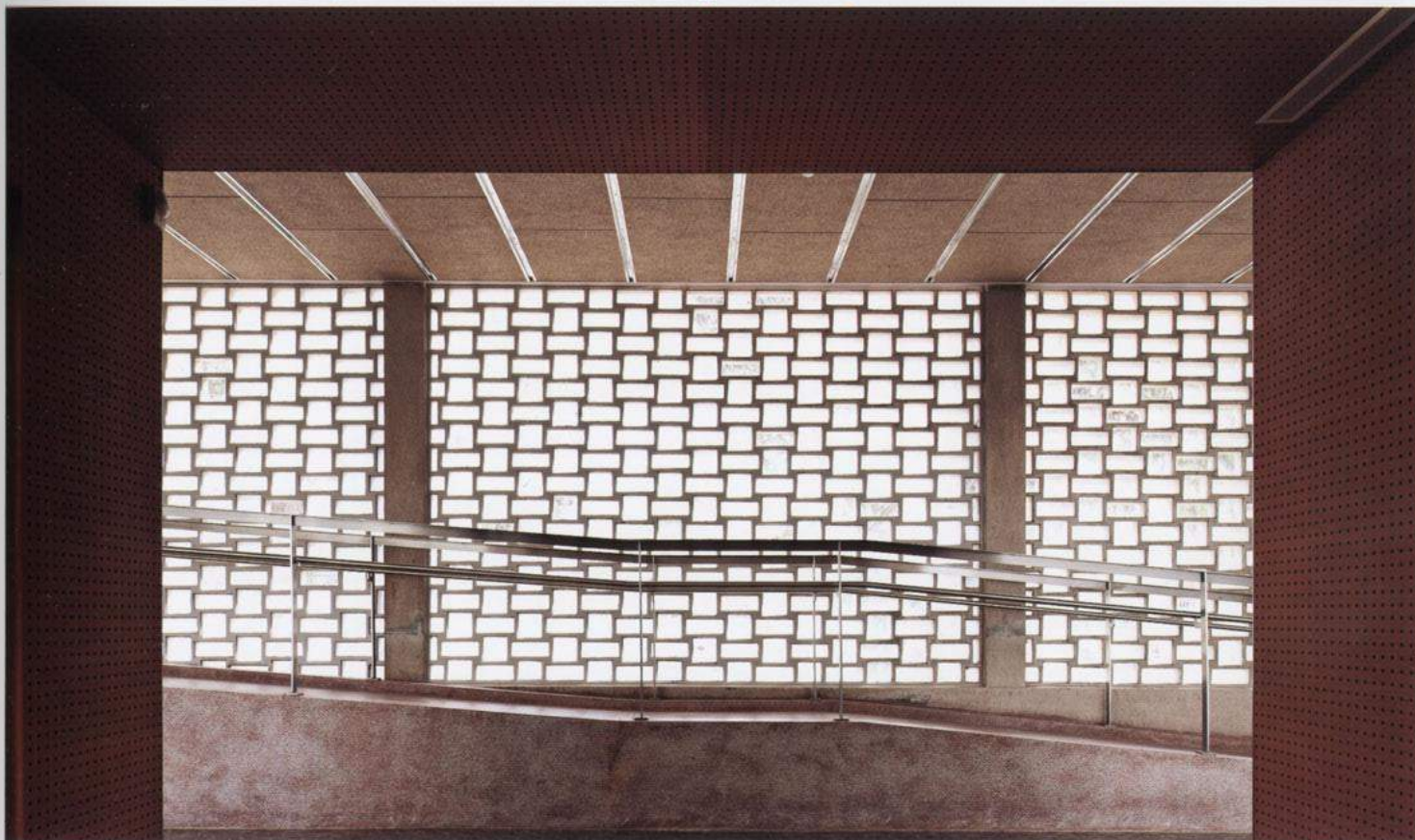
Photography: FG + SG -- Fotografia de Arquitectura









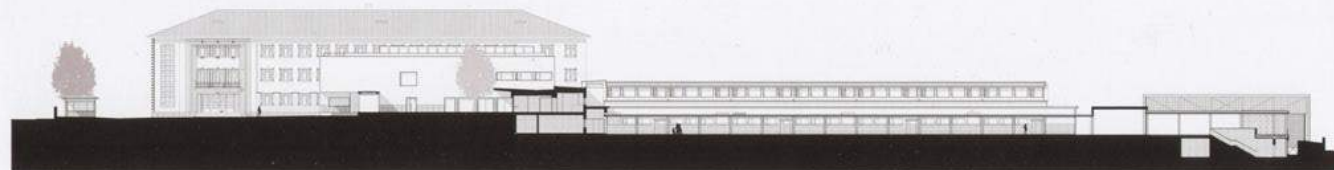




ALÇADO NASCENTE



ALCADO POENTE



CORTE NORTE

The modernization of the Domingos Sequeira Secondary School

Leiria, Portugal
BFJ Arquitectos

The modernization of the Domingos Sequeira Secondary School in Leiria is part of the secondary school modernization program promoted by Parque Escolar - EPE, and can be resumed in the following operations:

Construction of a new building, which will function as the new school entrance, taking advantage of its location and configuration to serve as a connection between the existing buildings. This new block will incorporate common spaces, allowing for a greater integration and interaction between the various school users, thus creating a new

centrality. Apart from the administrative and executive spaces, this building will include the new library and resource center and other support spaces for the schooling community such as a convenience store, the copy centre, the students' association and a snack bar that will complement the current cafeteria.

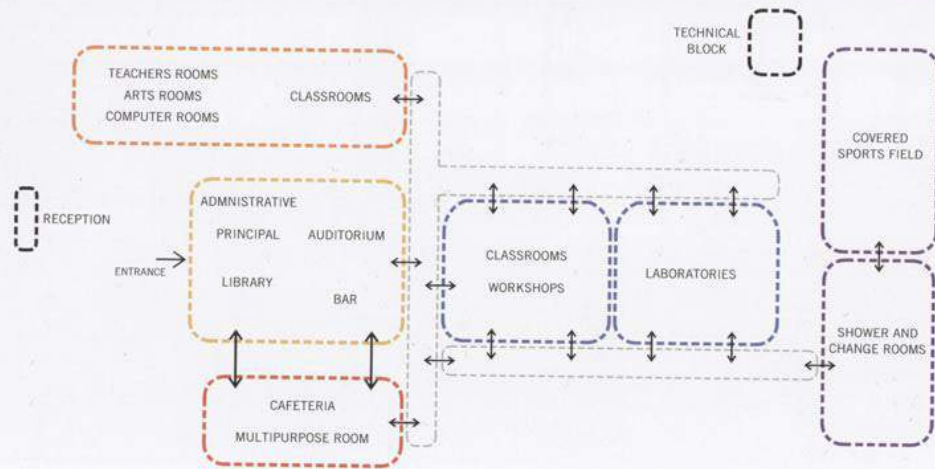
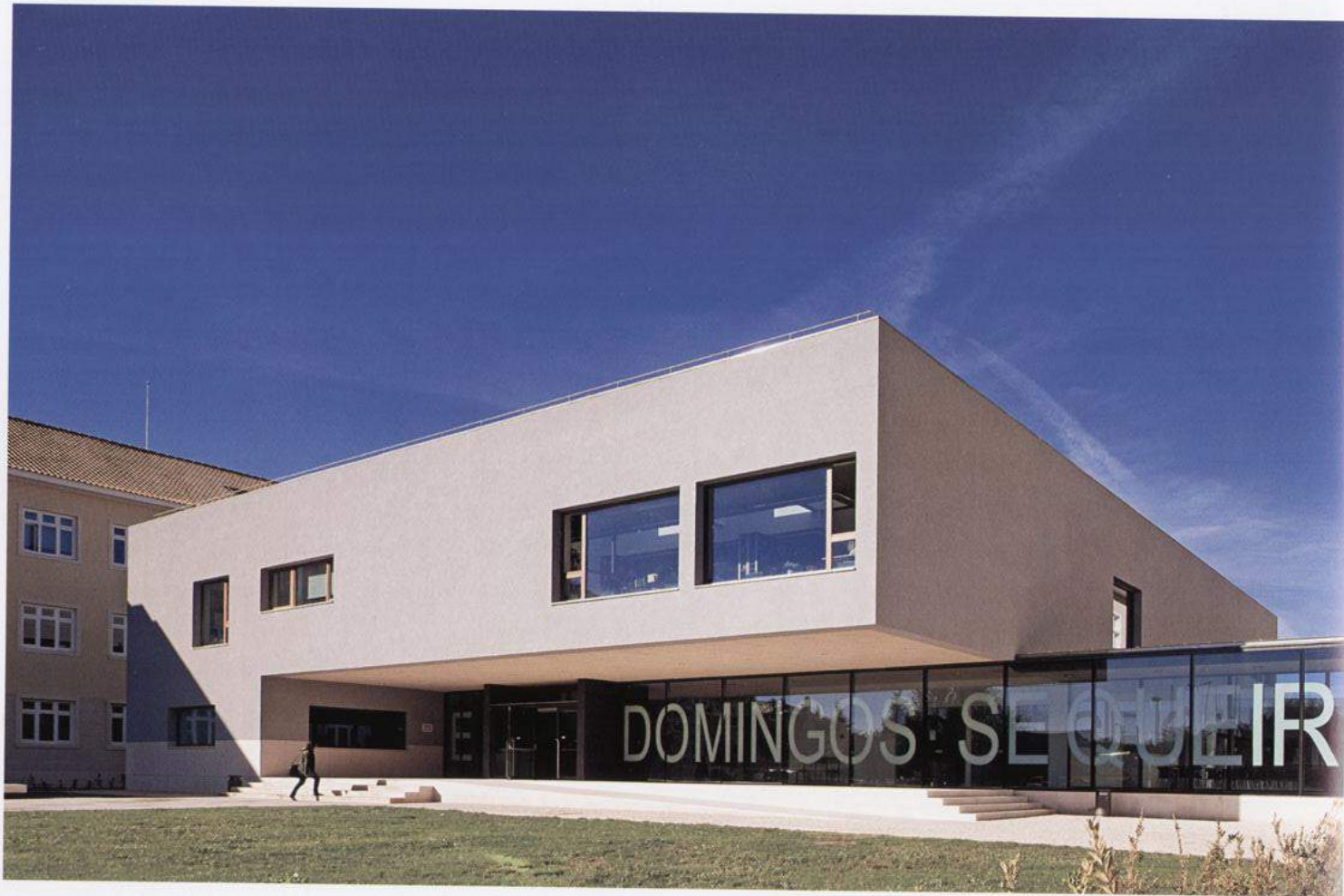
The school's central atrium is a large space with natural light, serving as a meeting point for the entire school community. Spatial features are enhanced by the paintings produced by the school students.

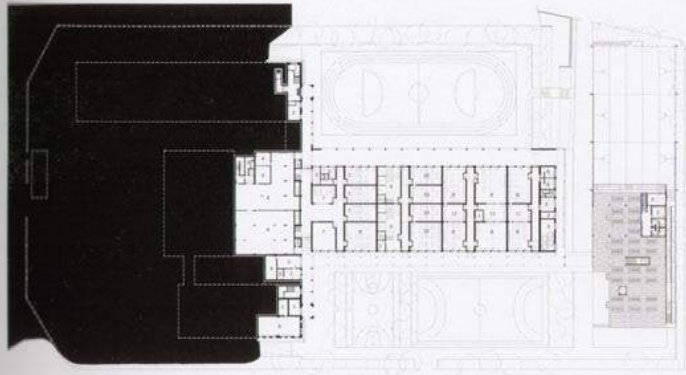
Remodeling the existing buildings in order to enhance their spatial and construction qualities, ensuring the fulfilment of the current demands in terms of comfort, security and accessibility.

Building of a new covered sports field, including support facilities (shower, change-rooms and support spaces).

Remodeling of the school's exterior areas and detachment between pedestrian accessibility and automobile parking zones.

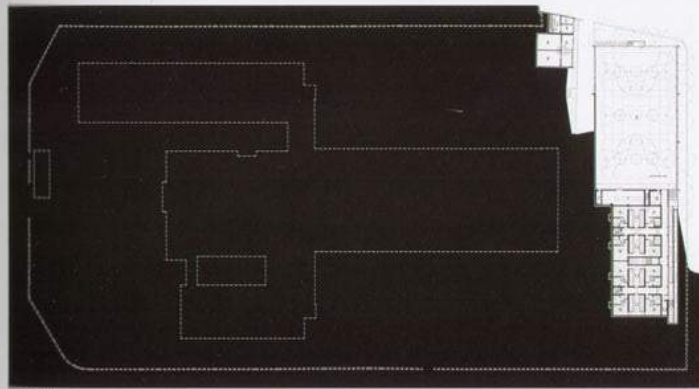






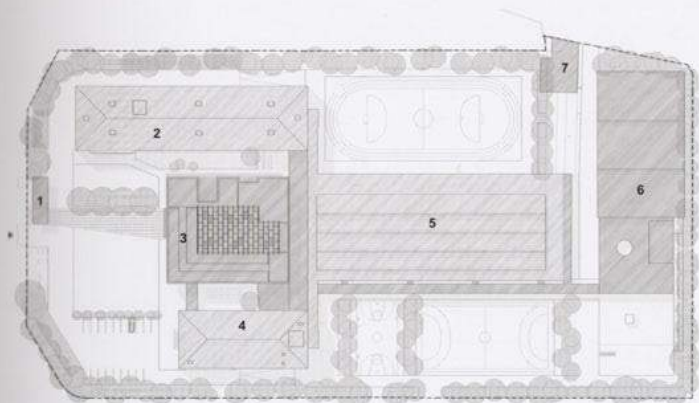
LEVEL 0

1. Storage
2. Workshop
3. Technical Area
4. Archives
5. Workshop
6. Maintenance
7. Classroom
8. Laboratory
9. Workshop
10. Electrical Installations
11. Preparation Room



LEVEL 1

1. Transformer Station
2. Photocopy
3. General Framework
4. Water tank
5. Shower pump
6. Covered Sports Field
7. Storage
8. Nurse
9. Change room
10. Workshop
11. Sports (Change room)
12. Technical Area

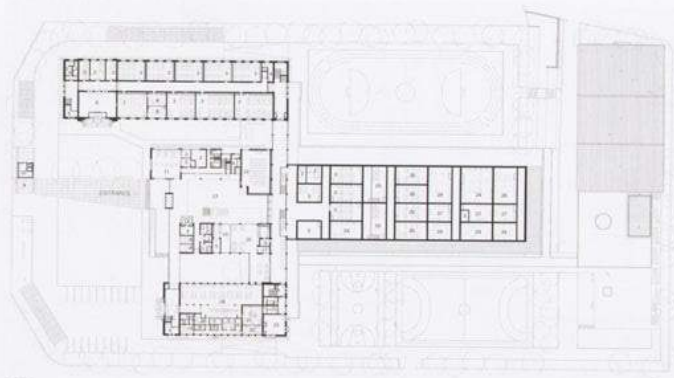


GENERAL PLAN

1. RECEPTION
2. MAIN CLASSROOM BLOCK
3. NEW BUILDING (ENTRY, ADMINISTRATIVE AND COMMON SPACES)
4. MULTIPURPOSE ROOM / CAFETERIA
5. LABORATORY AND WORKSHOP BUILDING
6. COVERED SPORTS FIELD (+ SHOWER AND CHANGE ROOMS)
7. TECHNICAL BLOCK

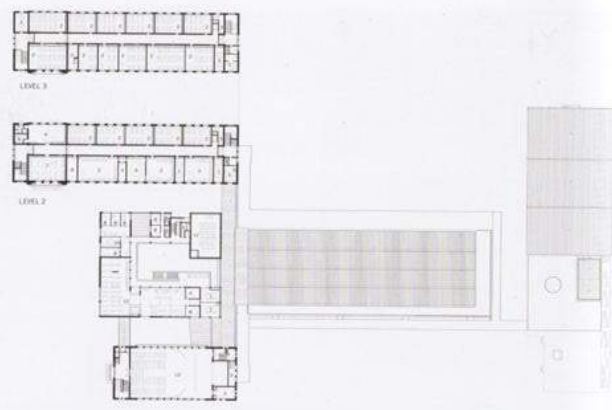
0 10 20 30 40 50





LEVEL 1

- 1. Workshop / 2. Workshop / 3. Classroom / 4. Technical Area / 5. Storage / 6. Storem / Exhibition Space /
- 7. Teacher's Workshop / 8. Meeting Room / 9. School Entrance / 10. Reception / 11. Secretariat /
- 12. Auditorium / 13. Central Atrium / 14. Reception / 15. Student Store / 16. Bar / 17. Students' Association /
- 18. Cafeteria / 19. Lounge / 20. Kitchen / 21. Canteen Area / 22. Preparation Area / 23. Non-teaching Staff Room / 24. Laboratory / 25. Workshop / 26. Electrical Installation / 27. Preparation Room



LEVEL 2

LEVEL 2

- 1. Group Workshop / 2. Classroom / 3. Technical Area / 4. Storage / 5. Workshop / 6. Teacher's Room /
- 7. Teacher's Workshop / 8. Workshop / 9. Computer Workshop / 10. Meeting Room / 11. Auditorium /
- 12. Library / 13. Multi-purpose room







